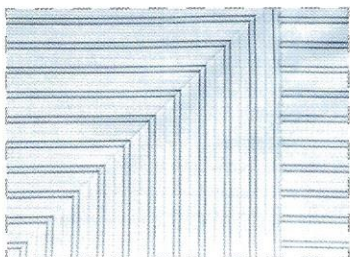


## STRIPES AND CHECKS

For fabrics with a stripe or check pattern, a little more care is needed when laying out the pattern pieces. If the checks and stripes are running across or down the length of the fabric when cutting out, they will run the same direction in the finished garment. So it is important to place the pattern pieces to ensure that the checks and stripes match and that they run together at the seams. If possible, try to place the pattern pieces so each has a stripe down the center. With a checked fabric, be aware of the hemline placement on the pattern.

### EVEN AND UNEVEN STRIPES

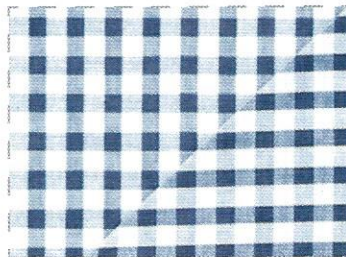


**EVEN STRIPES** When a corner of the fabric is folded back diagonally, the stripes will meet up at the fold.



**UNEVEN STRIPES** When a corner of the fabric is folded back diagonally, the stripes will not match at the fold.

### EVEN AND UNEVEN CHECKS



**EVEN CHECKS** When a corner of the fabric is folded back diagonally, the checks will be symmetrical on both of the fabric areas.

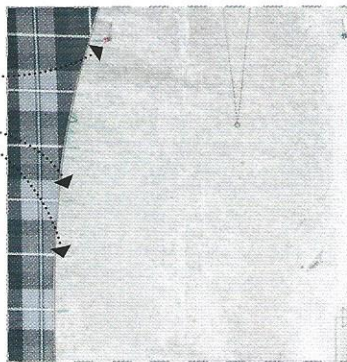


**UNEVEN CHECKS** When a corner of the fabric is folded back diagonally, the checks will be uneven in length, widthwise, or both.

### MATCHING STRIPES OR CHECKS ON A SKIRT

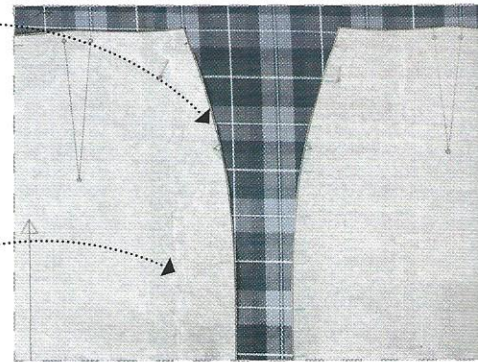
**1** Place one of the skirt pattern pieces on the fabric and pin in place.

**2** Mark on the pattern the position of the boldest lines of the checks or stripes.

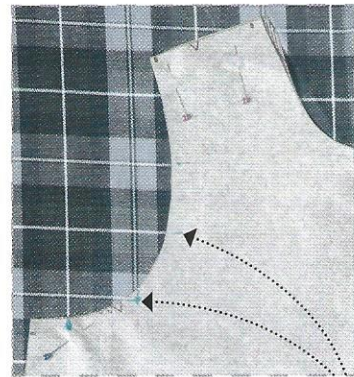


**3** Place the adjoining skirt pattern piece alongside, with notches matching and side seams even. Transfer the marks to the second pattern piece.

**4** Slide the second pattern piece across, matching up the bold lines. Pin in place.



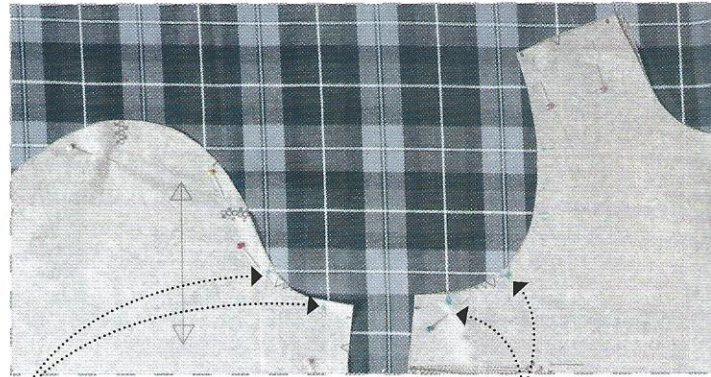
### MATCHING STRIPES OR CHECKS AT THE SHOULDER



**1** Mark the boldest lines of the stripes or checks around the armhole on the front bodice pattern.

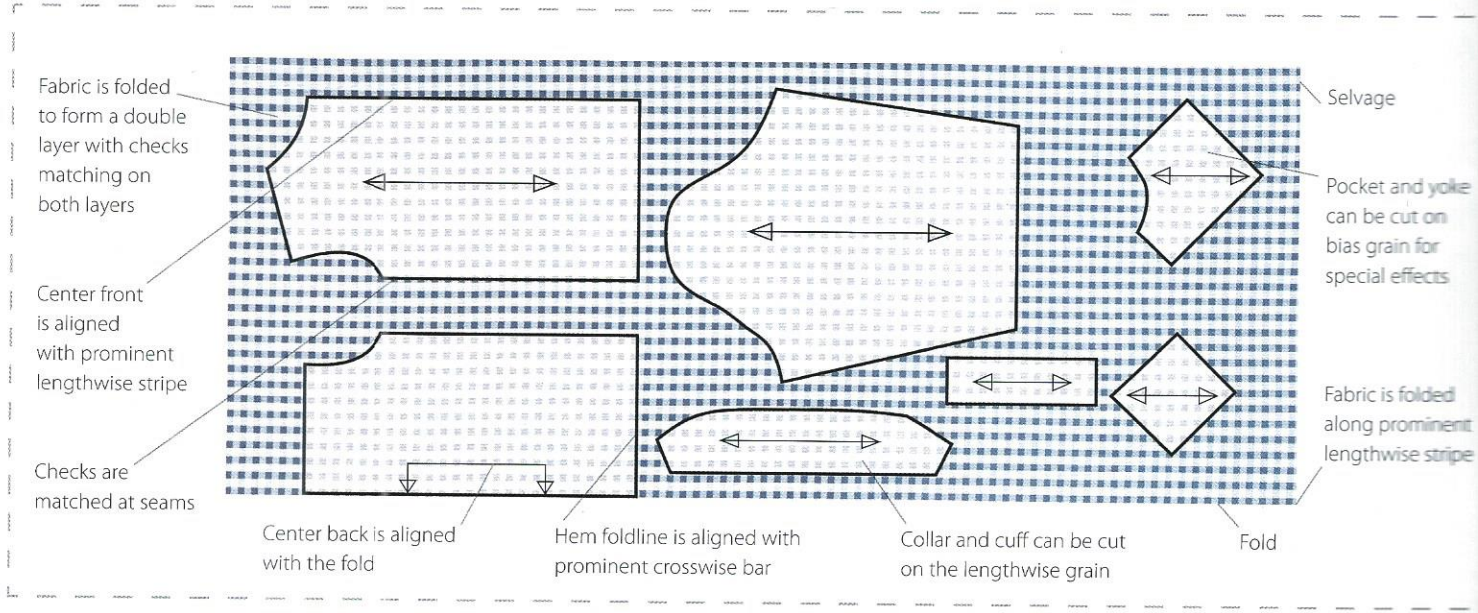


**2** Place the sleeve pattern on to the armhole, matching the notches, and copy the marks on to the sleeve pattern.

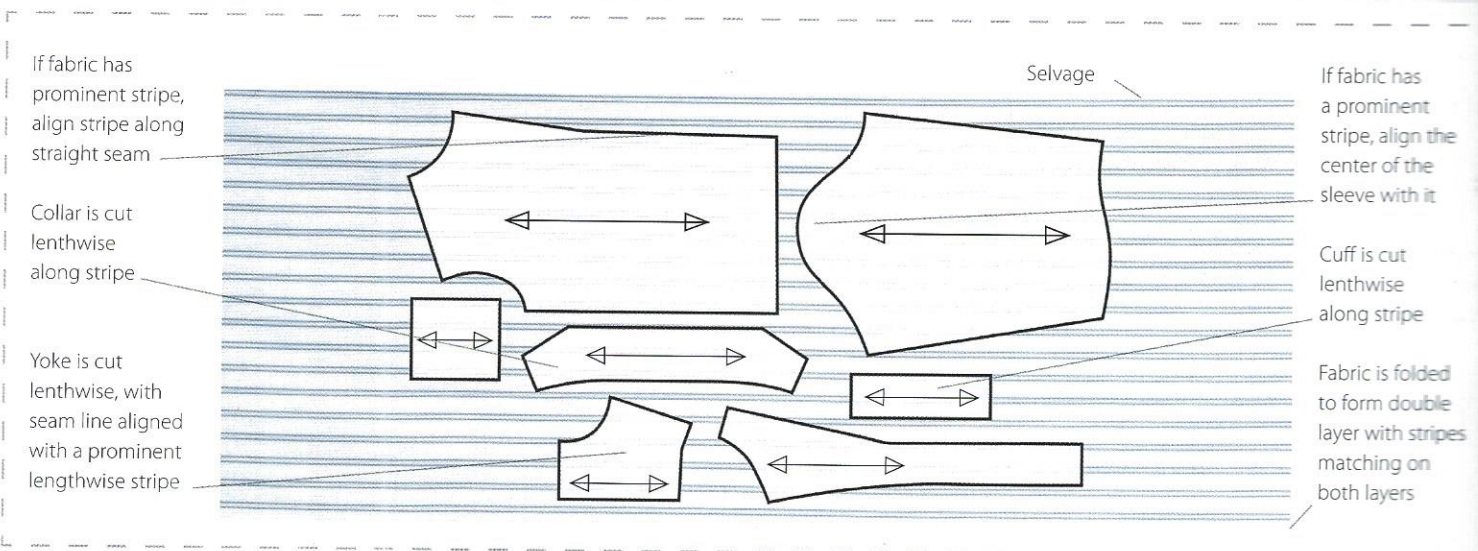


**3** Place the sleeve pattern on to the fabric, matching the marks to the corresponding bold lines, and pin in place.

### LAYOUT FOR EVEN CHECKS ON FOLDED FABRIC



### LAYOUT FOR EVEN STRIPES ON FOLDED FABRIC



### LAYOUT FOR UNEVEN CHECKS OR STRIPES ON UNFOLDED FABRIC

