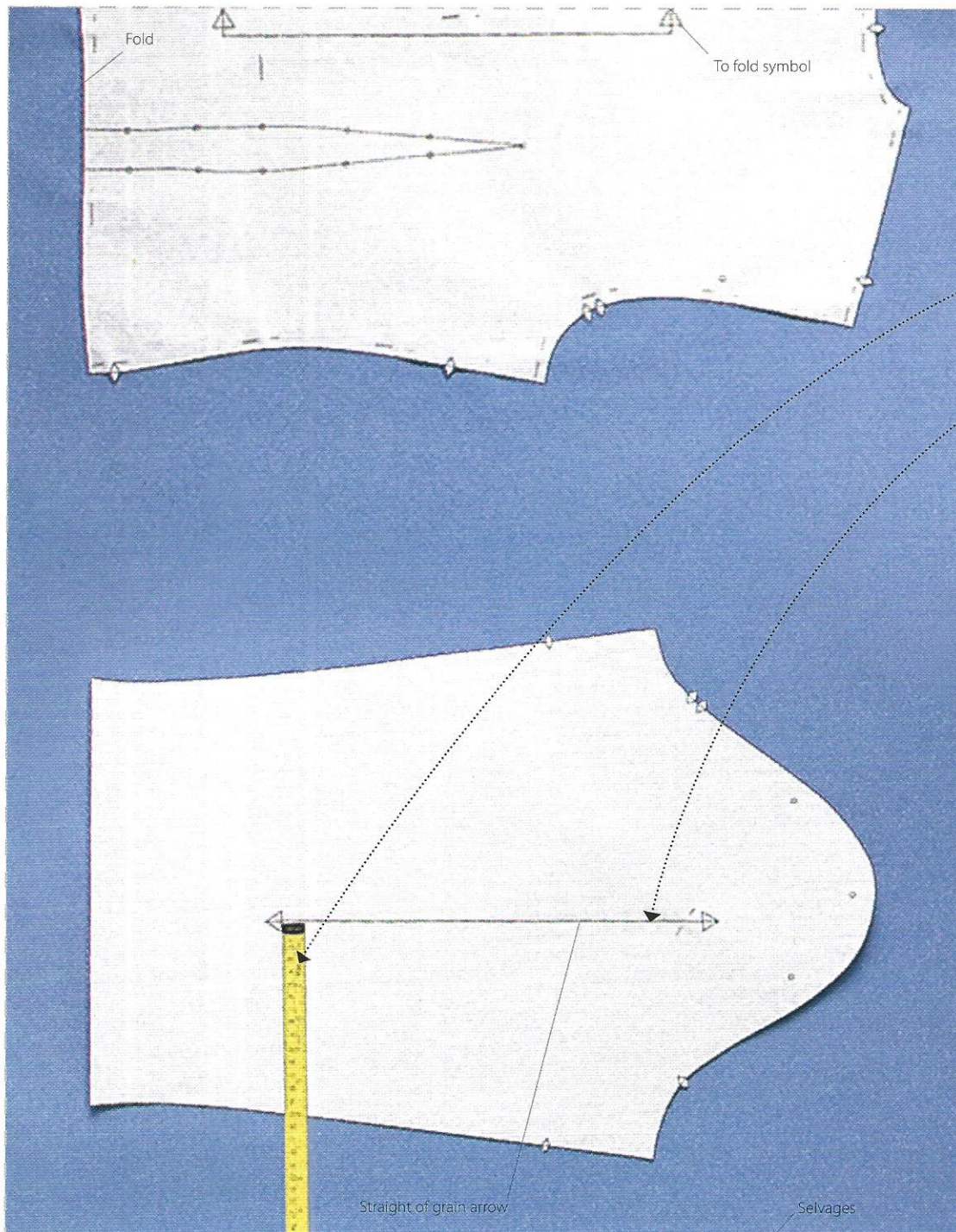


PATTERN LAYOUT

For cutting out, fabric is usually folded selvage to selvage. With the fabric folded, the pattern is pinned on top, and both the right- and left-side pieces are cut out at the same time. If pattern pieces have to be cut from single-layer fabric, remember to cut matching pairs. If a fabric has a design, lay the fabric design-side upward so that you can arrange the pattern pieces to show off the design. If you have left- and right-side pattern pieces, they are cut on single fabric with the fabric right-side up and the pattern right-side up.

PINNING THE PATTERN TO THE FABRIC



1 The "to fold" symbol indicates the pattern piece is to be pinned carefully to the folded edge of the fabric. To check the straight of grain on the other pattern pieces, place the grain arrow so that it looks parallel to the selvage, then pin to secure at one end of the arrow.

2 Measure from the pinned end to the selvage and make a note of the measurement.

3 Measure from the other end of the arrow to the selvage.

4 Move the pattern piece slightly until both measurements are the same, then pin in place.

5 Once the pattern is straight, pin around the rest of it, placing pins in the seam allowances.