

CHAPTER 7

Neck & Edge Finishes

Using bands or bindings is one of the most common ways to finish the neckline and other knit garment edges, and there are many ways to vary them. A separate **band** can be in self-fabric or a contrast. You can be creative and use a double band, skew the band, or add a cowl band. You can **bind** edges with self-fabric, contrast fabric, or foldover elastic.

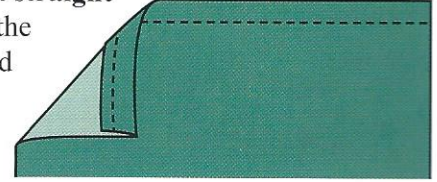
You can also many neckline styles in the pattern catalogs. These patterns come with complete instructions and accurate pattern pieces to make neckline finishes practically foolproof.

OVERVIEW OF FINISHES

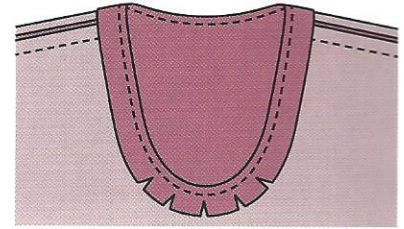
These are the common finishes for necklines, armholes, and front edges. For more ideas, see Hems Chapter 9 and Closures Chapter 10.

Facings

Cut-on facing on a straight edge – Fold under the raw edge, press, and topstitch.

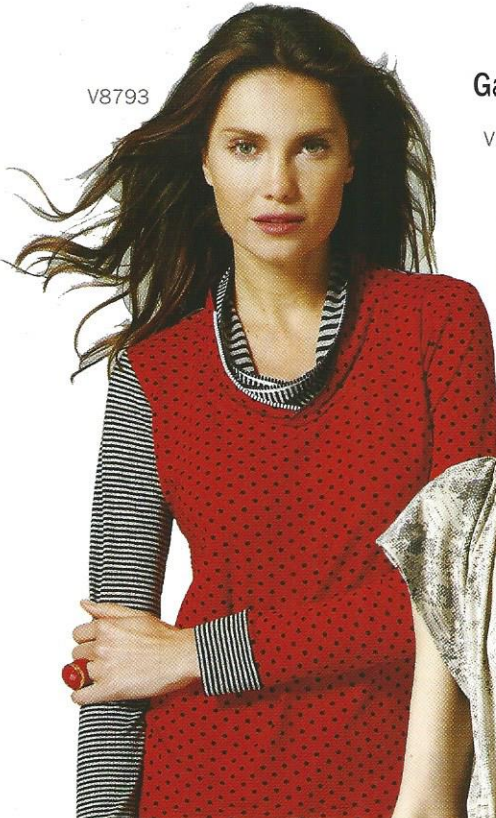


Cut-on facing on a curved edge – You may have to clip the seam allowances in the curved areas if the fabric is not very stretchy and/or the curve is too great.



Double cowl band

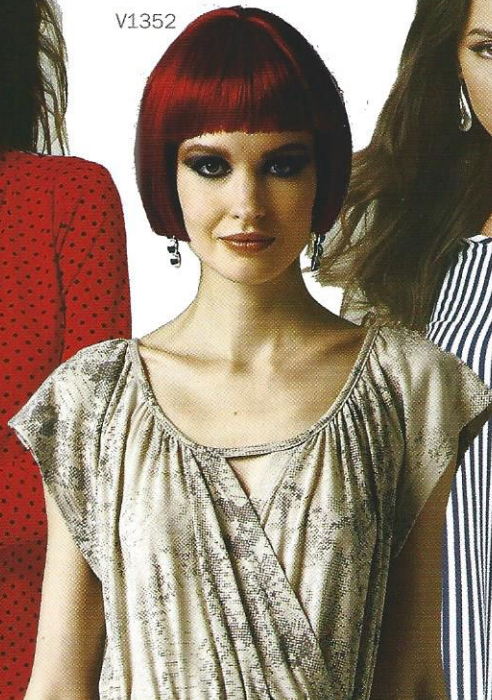
V8793



kAtheRine Tilton

Gathers into binding

V1352



REBECCA TAYLOR

Binding

V8710



kAtheRine Tilton

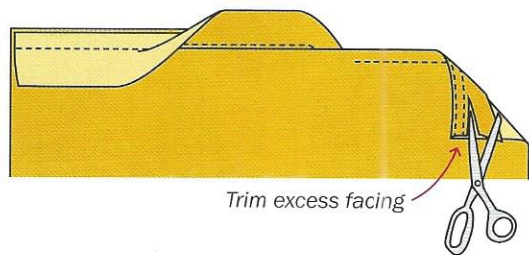
Double band

V1315



REBECCA TAYLOR

Sewn-on facing – Stitch the facing right sides together to the edge. Trim and clip curves. Understitch facing to seam allowances. Turn under, press, and topstitch. Trim excess facing away next to topstitching.

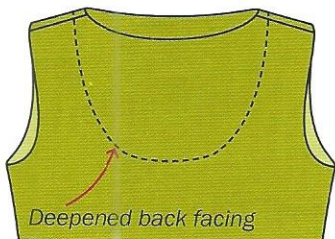


Trim excess facing

PRO Tip

Facings can be deepened, interfaced

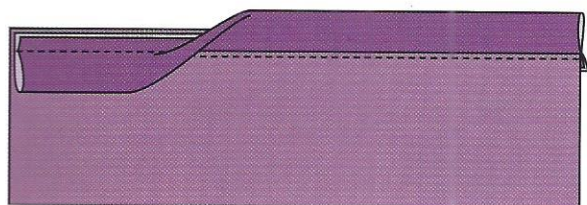
for body, and topstitched to hold in place.



Deepened back facing

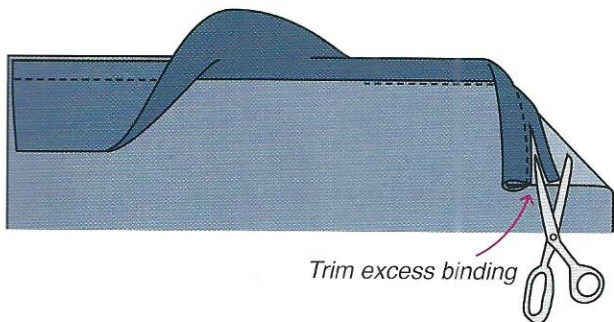
Bands

Fold band in half lengthwise, wrong sides together. Sew to edge right sides together. Press band away from garment and edgestitch next to seam through seam allowances.



Bindings

Remove seam allowance from the edge to be bound. Sew binding to garment edge right sides together. Wrap binding over the seam allowance. Stitch in the well of the seam to anchor the wrong side of the binding. Trim to stitching.



Trim excess binding

PRO Tip

Some edges need to be stabilized before finishing. See page 69, stabilizing knits.

Raw Edge Finish

A popular, modern finish is simply to leave the edges raw. This is an oxymoron since technically a raw edge is not a finished edge, but today's polyester and nylon knits are often seen with raw edges at the neckline, armhole, and hem.

The hem and keyhole back of this jersey dress have been left raw.



Play! Test Tip

If the edge looks as if it will stretch or flute, you can sew a straight stitch 1/4" from the edge to keep it from stretching.