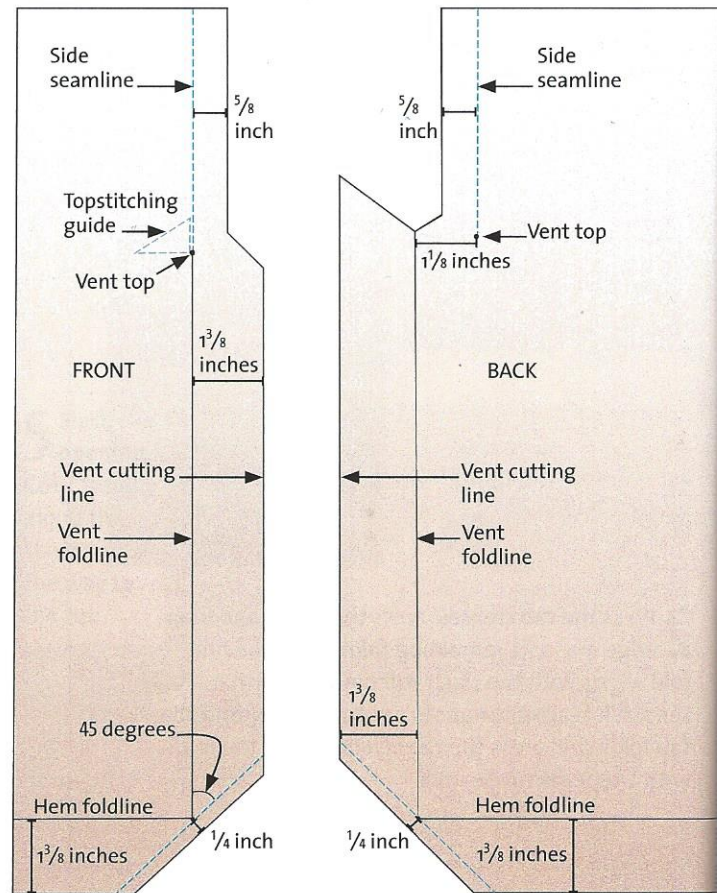


# A mitered lapped vent

This attractive vent moves as you do but stays closed when you stand still. It starts with a pattern in which the edges are cut to make mitering easy and precise. This technique yields a vent with a  $1\frac{3}{8}$ -inch-wide facing and equally wide hem allowances. Adjust the vent length and allowances as desired; be sure allowances on the adjacent edges are equal in width.

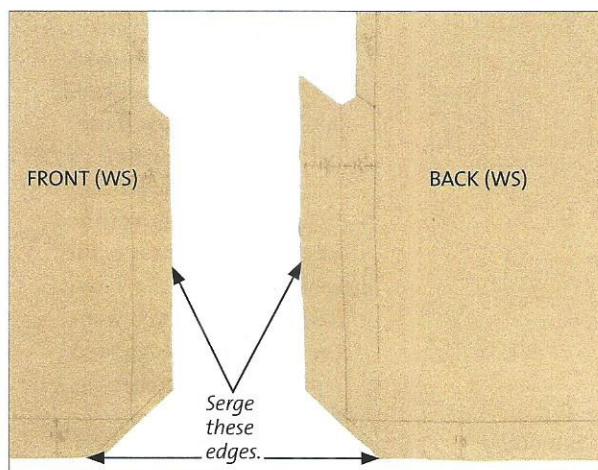
## ADAPT THE PATTERNS

- Trace the front and back patterns.** Draw the side seamlines  $\frac{5}{8}$  inch from the cutting line, mark the hem foldline, and place a dot at the top of the vent opening. Adjust the hem allowance to  $1\frac{3}{8}$  inches wide.
- Add a front extension.** Draw a line  $1\frac{3}{8}$  inches outside the original side seamline, from 1 inch above the vent top to the new hem cutting line. At the level of the vent top, draw a diagonal line from the vent edge to the side seam cutting line.
- Draft the mitered corner.** At the intersection of the side seamline and hem foldline, draw a line at a 45-degree angle that intersects the vent edge and hem edge. This is the miter seamline. Add a  $\frac{1}{4}$ -inch-wide seam allowance outside this line.
- Add a back extension.** Draw a line  $1\frac{3}{8}$  inches outside the side seamline; label it "Vent foldline." Draw a second line  $1\frac{3}{8}$  inches beyond the foldline; this is the vent cutting line.
- Shape the vent top.** Mark the vent foldline at the level of the vent top. Mark the vent cutting line 1 inch above this level. Draw a line to connect these marks. Fold the extension on its foldline, and trace the angle of this diagonal line to the extension just outside the side seam allowance, intersecting the side seam cutting line.
- Draft the mitered corner.** As for the front pattern, draw the angled miter seamline and its  $\frac{1}{4}$ -inch-wide seam allowance.

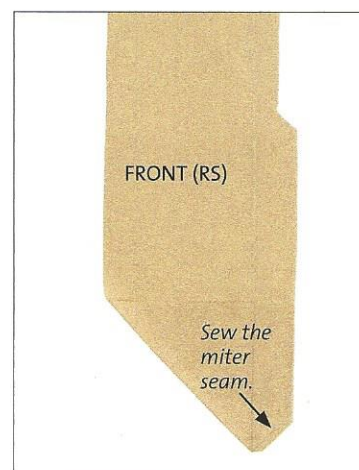


## CONSTRUCT THE VENT

- Cut the fabric.** Following the new front and back patterns, cut the fabric and transfer the marks to the fabric wrong side. Finish the side and hem edges, but not the diagonal corner, with a three-thread overlock stitch.

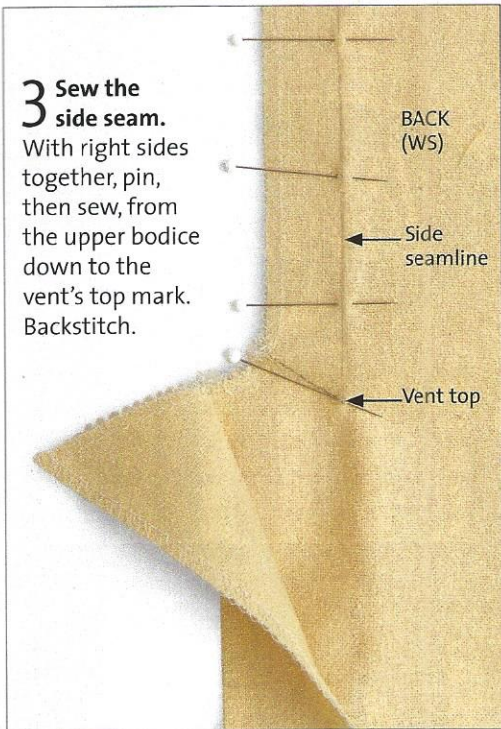


- Miter the corners.** On the garment front, align the miter seam with right sides together and sew. Repeat on the garment back. Trim the corner at an angle and press the seam allowances open over a point presser. Turn the corners right side out and press.



### 3 Sew the side seam.

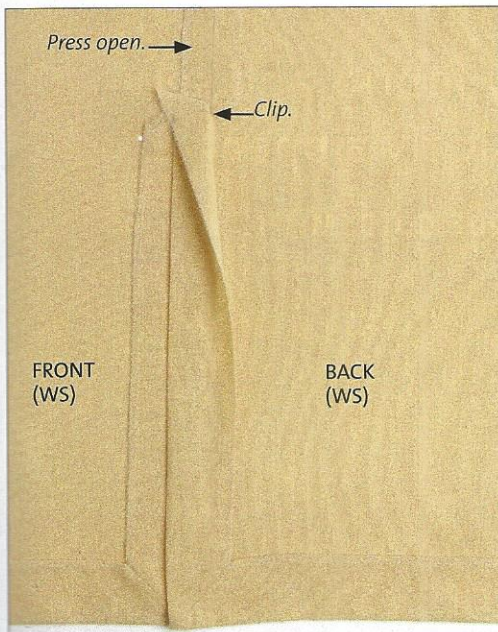
With right sides together, pin, then sew, from the upper bodice down to the vent's top mark. Backstitch.



*Achieve minimalist elegance with a precisely sewn side vent.*

*Pattern: Cutting Line Designs Just My Style, modified. Fabric: linen, CuttingLineDesigns.com.*

**4 Press.** Clip the back seam allowance at the vent top to release it, and press open the seam allowances above the vent. Press the vent's folded edges and hem foldline.



**5 Edgestitch to finish.** Apply a strip of Steam-A-Seam between the vent and garment outer layers and fuse to hold the vent edges in place. Edgestitch the vent and hem edges. At the vent top, sew a triangle to reinforce the opening and keep the seam allowances flat.



